

Laguna Seamless Spray Booth



Pro-V and Pro-X **OWNERS MANUAL**

Laguna Clay Company at www.Lagunaclay.com
(800) 4 LAGUNA

Thank you for selecting Laguna's Pro-V or Pro-X Spray Booth!

The finest in workmanship and materials have gone into constructing your new spray booth, and with proper use and care, you will enjoy years of dependable service. The purpose of this manual is to acquaint you with your Laguna Spray Booth and to provide important operational and safety information. As you begin using your Spray Booth, **remember, there is no substitute for common sense in the safe operation of this equipment.**

Always put safety first! Direct any questions or comments you may have to info@lagunaclay.com.



Material Composition

Your spray booth was manufactured from ethylene–olefin copolymer, commonly referred to as polyethylene. This material has a melt point of 330°F and a flash point of 650°F. The material is stable unless subjected to extremely strong acids. A Material Safety Data Sheet (MSDS) for the polyethylene can be found at www.lagunaclay.com.

Spraying Applications

The standard fan, motor and filters sold as accessories to the Laguna Spray Booth are for use with water based, non-flammable and non-toxic materials. This motor may be purchased from Laguna Clay Company. For safety reasons, a special motor is required when spraying flammable materials. Use of toxic or flammable materials may require a more sophisticated air filtration system. Installation of the spray booth, motor, filters, and venting must comply with local building codes, EPA and air quality requirements. For additional information contact your local HVAC professional.



Location and Installation

Locate your Pro-V or Pro-X spray booth:

1. On a flat, stable surface.
2. In an area with plenty of open space.
3. Within easy access to your glazes.
4. In an area accessible for easy clean-up.

If you mount the fan and motor on the back of the booth, be sure to bolt the booth's legs to the floor, stand or bench for stability.

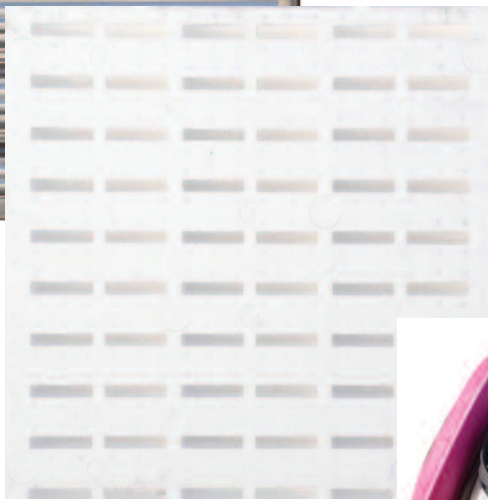
Venting and ducting

A primary function of your spray booth is to vent and collect overspray. This is accomplished by three components: the filters, the fan, and the ducting. The filters catch most of the over-spray. Glaze particles that are pulled past the filters will generally collect in the plenum behind the filters. While the installation of your Spray Booth is not complicated, many communities regulate the use and installation of such equipment, and we recommend you contact an HVAC contractor to ensure compliance with local building, environmental and safety requirements. Several venting options are offered later in this manual.



Filters

Laguna Clay Company offers two types of filters for the Pro-V or Pro X Spray Booth –styrofoam filters or long-lasting aluminum filters. Both filters are baffle design and should be washed after each spraying session. A set of two filters is required for the Pro –V booth, and one filter for the Pro X. Some filters are not reversible and must be positioned as indicated by air-flow arrows on the side of the filters.

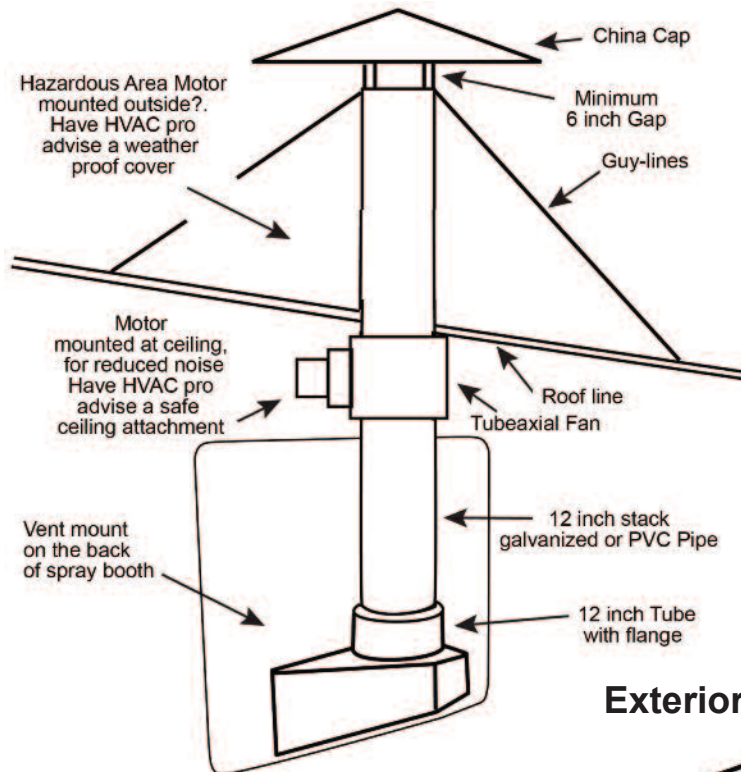


Fan and Motor:

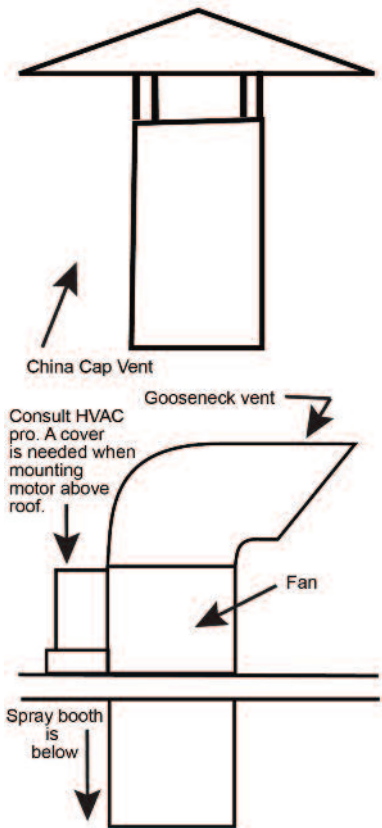
Exhaust fan/motor systems are available for both the Pro-V and Pro-X. Laguna has done extensive testing to ensure that the exhaust systems are properly matched to the booth size and static pressure created by typical booth installation. The standard motors are single phase, 115V. The Pro-V motor can be adapted to either 115V or 220V.

Motor Mount: While the fan & motor can be mounted on the plenum at the back of the booth, it is often desirable to run ducting from the plenum to an outside wall or roof-mount, thus separating motor and fan noise from the room in which the spray booth is being used. This is an alternate way to set up your fan and motor however, your HVAC or electrical contractor can help you explore all available options. Spray booth specifications and several installation options are provided on the following page.

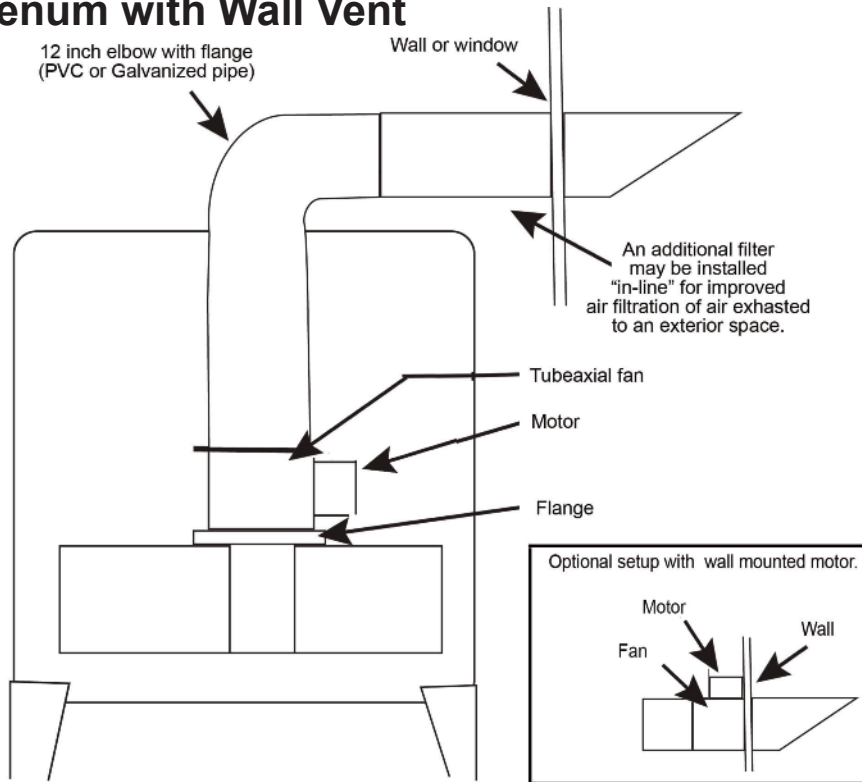
Installation with Fan & Motor Mounted Above Roof

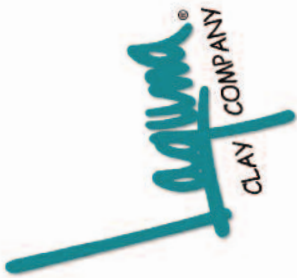


Exterior Vent Styles



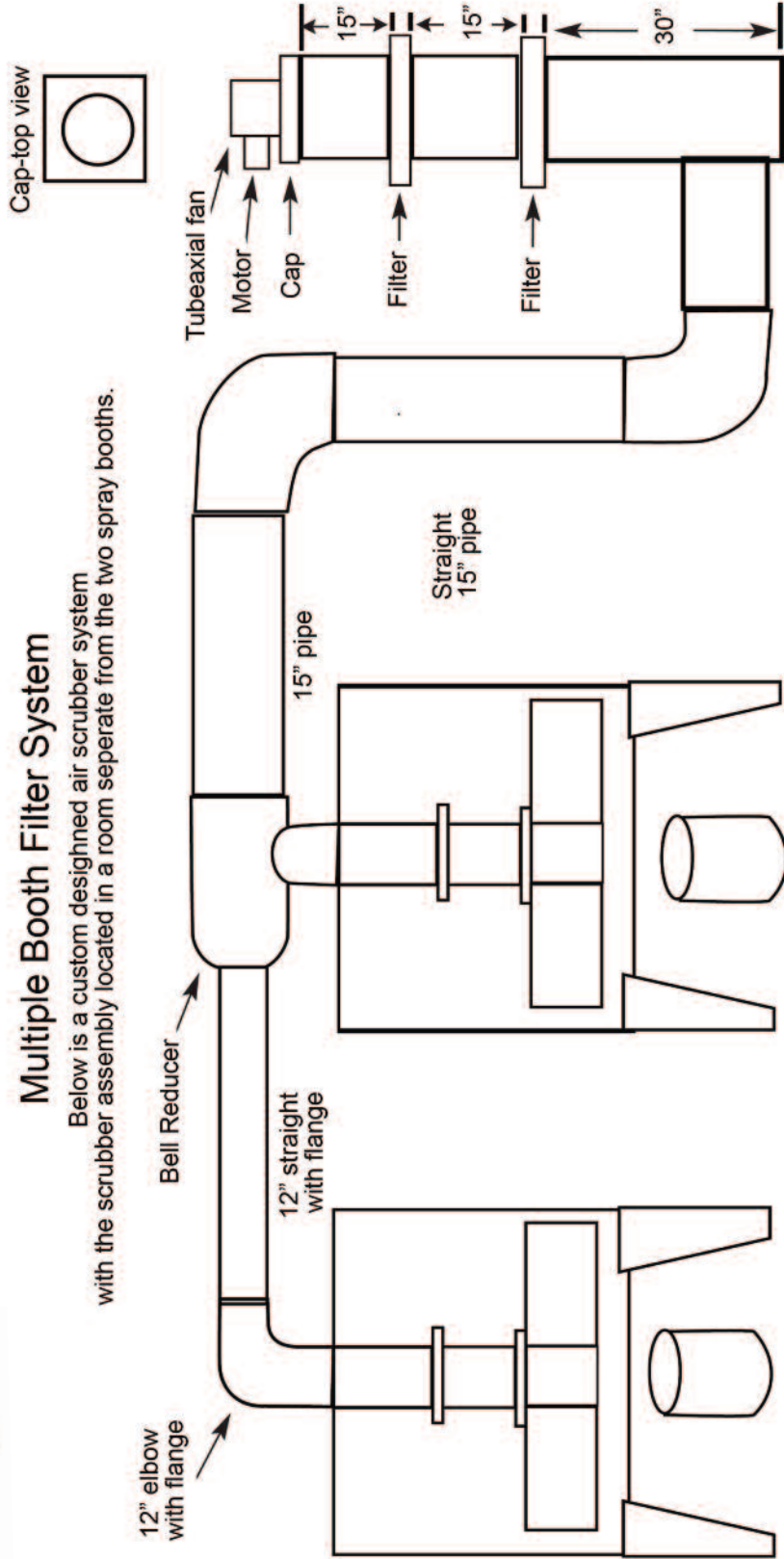
Installation with Fan & Motor on Plenum with Wall Vent





Multiple Booth Filter System

Below is a custom designed air scrubber system with the scrubber assembly located in a room separate from the two spray booths.

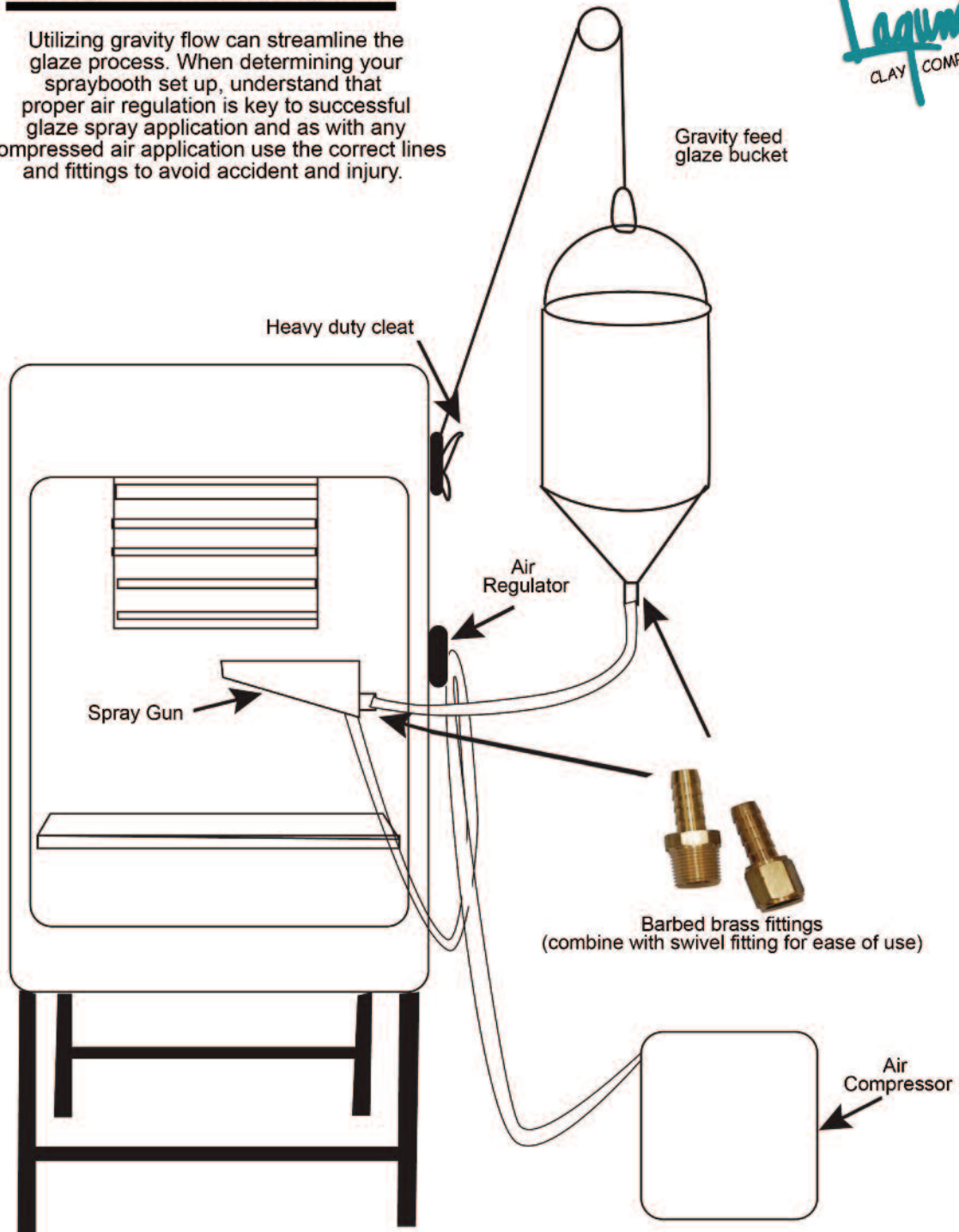


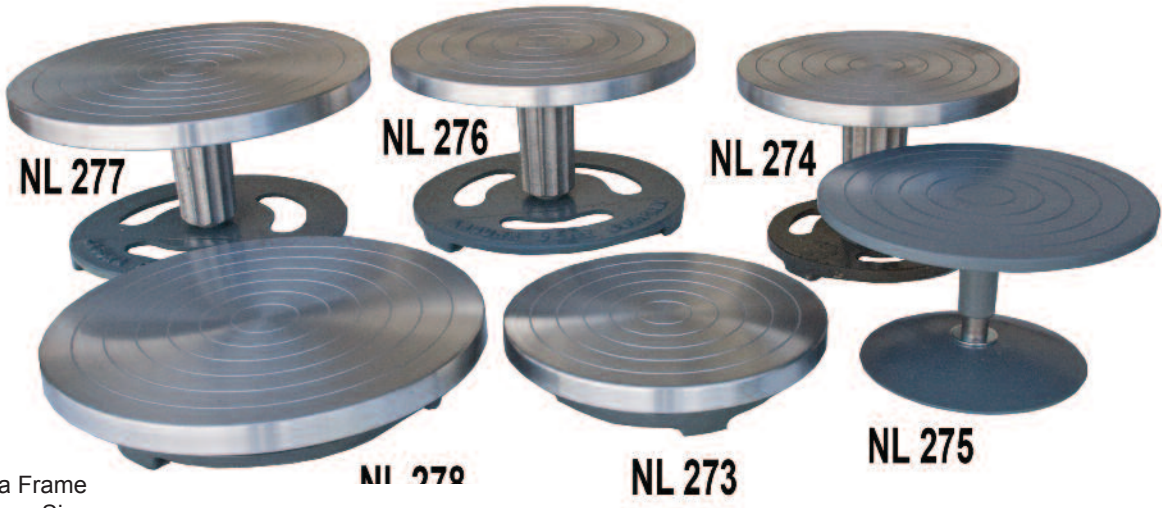
Either PVC or galvanized (air conditioning) pipe can be used for venting.

Scrubber Stack is 18" pipe

Gravity Flow Spray System

Utilizing gravity flow can streamline the glaze process. When determining your spraybooth set up, understand that proper air regulation is key to successful glaze spray application and as with any compressed air application use the correct lines and fittings to avoid accident and injury.





NL 277

NL 276

NL 274

NL 270

NL 273

NL 275

Laguna Frame
Stainless Sieves
TM-405 to TM-409



Laguna Banding Wheels:
Rugged cast aluminum base,
machined aluminum head with the
exclusion of NL-275 which has solid
steel construction).

Laguna Lab Sieves
TM-312 to TM-319



Air Regulator-
Recommended for use
with air guns.



Gravity Feed
Spray Gun
A121121



Laguna Tile Racks FS840 and FS841
Low Thermal mass, maximum load.



Speedy Spurs-
The way to stilt
quick! Good to
Cone one.



Soaps (RF320) and heavy duty kiln
posts (RF-301 to RF-307)

Laguna Clay Co., 14400 Lomitas Avenue, City of Industry, CA 91746 (626) 330-0631
info@lagunaclay.com www.lagunaclay.com

Thorley

KILN FURNITURE

*Affordable
kiln furniture and
custom refractories.*

*Our extensive selection,
reasonable pricing,
and durable,
time tested products
furnish your kiln
affordably...*

*Order your new
kiln setting today at*

*Your local
Laguna Distributor*

Laguna Clay Company at www.Lagunaclay.com
(800) 4 LAGUNA