

OPERATION MANUAL

DE-AIRING PUG MILL

Model: ULTRA WAVE / 2HP

INSTALLATION:

THE PUGMILL SHOULD BE BOLTED FIRMLY ON TABLE OR FLAT GROUND WHERE SHOULD AVOID SUNLIGHT AND WET FLOOR.

SETTING UP:

FOLLOWS BELOW STEPS FOR PROPER INSTALLATION.

- 1) PUT VACUUM PUMP NEARBY PUGMILL, INSERT THE PUMP MALE PLUG INTO PUGMILL' S FEMALE PLUG AS SHOWN IN THE FOLLOWING PHOTO.



- 2) ATTACH THE VACUUM PUMP HOSE TO THE VACUUM CHAMBER NOZZLE AND SCREW TIGHTLY THE HOSE CLAMP. BE SURE THE TWO ENDS OF HOSE BEING CONNECTED PROPERLY WITH NOZZLES TO ENSURE VACUUM EFFECT. THE VACUUM PUMP IS OF OILLESS, TWO STAGES, PISTON TYPE HIGH VACUUM PUMP.
- 3) MATTING VACUUM PUMP FOR DECREASING VIBRATION AND NOISES UPON USING. IT DOES NOT NEED ANY MAINTENANCE.
- 4) VOTAGE: 220V, SINGLE PHASE

MUST KNOW BEFORE USING:

- 1) POSITION OF CLAY REST CAN BE MOVEABLE ACCORDING TO USER' S REQUIREMENT.
- 2) (3) GREASE CUPS ARE MOUNTED ON THE MACHINE. IT IS NECESSARY TO TURN A 360°CLOCKWISE AFTER EVERY 50 USING HOURS AND FILL UP WHENEVER GREASE RUNS OUT.

- 3) WATER FILTER IS A DEVICE WHICH CAN STRAIN OUT MOISTURE CONTAINING IN CLAY. ALWAYS DRAIN WATER IN THE FILTER.
- 4) DO NOT PUT DRY CLAY INTO PUGMILL. MAKE SURE NO OTHER STUFFS IN THE CLAY BEFORE PUT INTO THE PUGMILL.
- 5) THE PUGMILL TURNS ON/OFF WITH A KEY WHICH SHOULD BE SAFEKEEPING AND KEPT AWAY FROM CHILD TO AVOID DANGER.

6) WARNING:

ALTHOUGH A HOPPER SAFETY GRILL HAS BEEN BUILT IN HOPPER FOR SAFETY PURPOSE, DO NOT INSERT FINGER, HAND OR ANY OTHER TOOLS INTO HOPPER TO AVOID THE INJURIES TO HINGERS OR THE DAMAGE TO PUGMILL.

7) WARNING:

DO NOT ALLOW CHILD TO USE THE MACHINE. PLEASE TAKE OUT THE KEY AFTER USING EVERY TIME.

OPERATION:

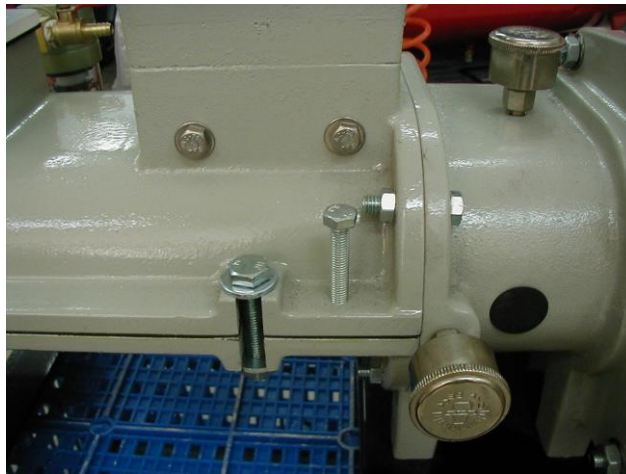
1. PLUG IN THE POWER CORD.
2. INSERT THE KEY AND TURN KEY SWITCH CLOCKWISE FOR STANDARD PUGGING. THEN YOU MAY TURN ON VACUUM PUMP SWITCH TO APPLY VACUUM FUNCTION.
3. PUT CLAY INTO HOPPER BY USING PLUNGER.
4. PUSH EMERGENCY BUTTON TO STOP PUGMILL WHENEVER EMERGENCY OCCURRED. TO RELEASE EMERGENCY SWITCH BY COUNTERCLOCKWISE TURNING FOR REUSING.
5. WET GASKET OF PLASTIC COVER OF VACUUM CHAMBER TO ENSURE BEST VACUUM EFFECT.
6. SUGGEST TO PUG CLAY FIRST WITHOUT USING VACUUM PUMP AND THEN DO IT AGAIN WITH VACUUM CONDITION SO THAT THE MIXED CLAY WILL BE VERY TENACIOUS.
7. FEW CLAY WILL BE SUCKED INTO VACUUM CHAMBER FROM TIME TO TIME. CLEAN CLAY OUT OF VACUUM CHAMBER OCCASIONALLY. PROCEDURE OF CLEANING JOB: STOP THE MACHINE, OPEN VALVE, REMOVE PLASTIC COVER OF VACUUM CHAMBER AND THEN REMOVE THE CLAY IN THE SLOT OF VACUUM CHAMBER WITH A STICK.

8. WHEN THE PUGMILL IS NOT IN USE, SEAL THE HOPPER AND NOZZLE WITH A POLYTHENE BAG TO KEEP THE CLAY WITH MOISTURE.

CLEAN UP CLAY FROM BARREL OF PUGMILL:

THIS IS A DEVICE WITH MERIT OF EASY CLEAN.

1. STOP THE MACHINE AND REMOVE THE KEY, UNPLUG POWER CORD, THEN REMOVE THE CLAY REST ASSEMBLY WHICH UNDER BARREL.
2. UNSCREW THESE 8 SCREWS WHICH CLAMPING UPPER AND LOWER BARREL.
3. THEN TURN THE 2 SCREWS (AS SHOWN BELOW) CLOCKWISE TO SPLIT THE UPPER AND LOWER BARREL.



4. RE ASSEMBLE BARRELS WHEN CLEANING JOB IS DONE. DO ABOVE PROCEDURES BACKWARD.